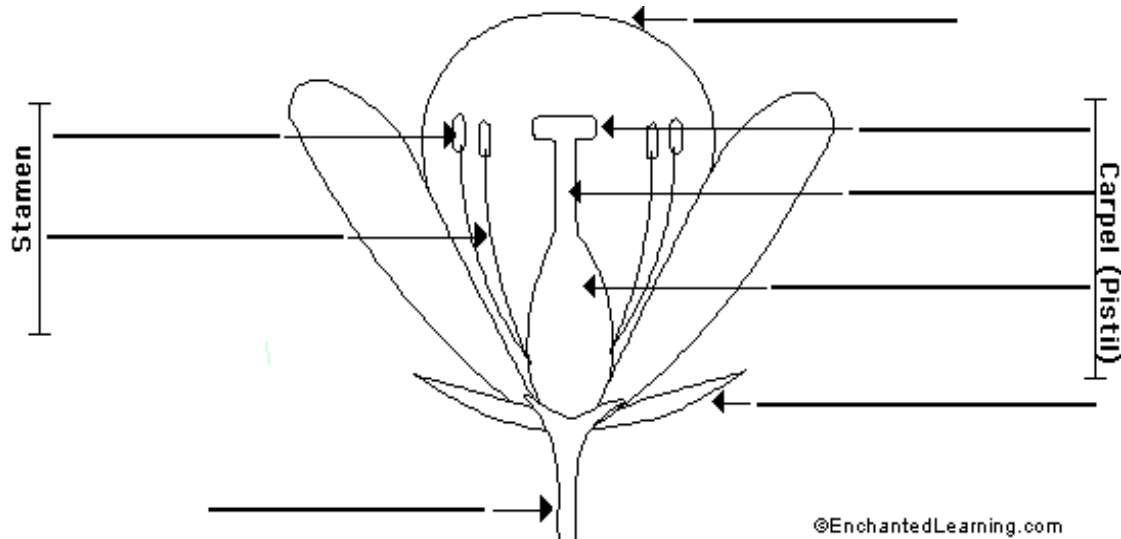


## Diagram – Label the Flower



**anther** - the anther is the tip of a flower's stamen (the male reproductive organs of the plant) - it contains the pollen.

**filament** - the filament is the part of the flower that holds the anther (and part of the stamen, the male reproductive organs of the plant).

**ovary** - the ovary is a female reproductive organ in plants that produces ovules. It is at the base of the pistil.

**petal** - a petal is one of the leafy structures that comprise a flower. Petals are often brightly-colored and have many different shapes.

**sepal** - the sepals are small leaves located directly under a flower - they are the outermost part of a flower.

**stem (also called the peduncle)** - the stem supports the plant.

**stigma** - the stigma is uppermost part of the pistil, the female reproductive tissue of a flower. The stigma receives the male pollen grains during fertilization, when they travel through the style to the ovary.

**style** - the style is part of the pistil, the female reproductive tissue of a flower. The style is a long tube on top of the ovary, and below the stigma.